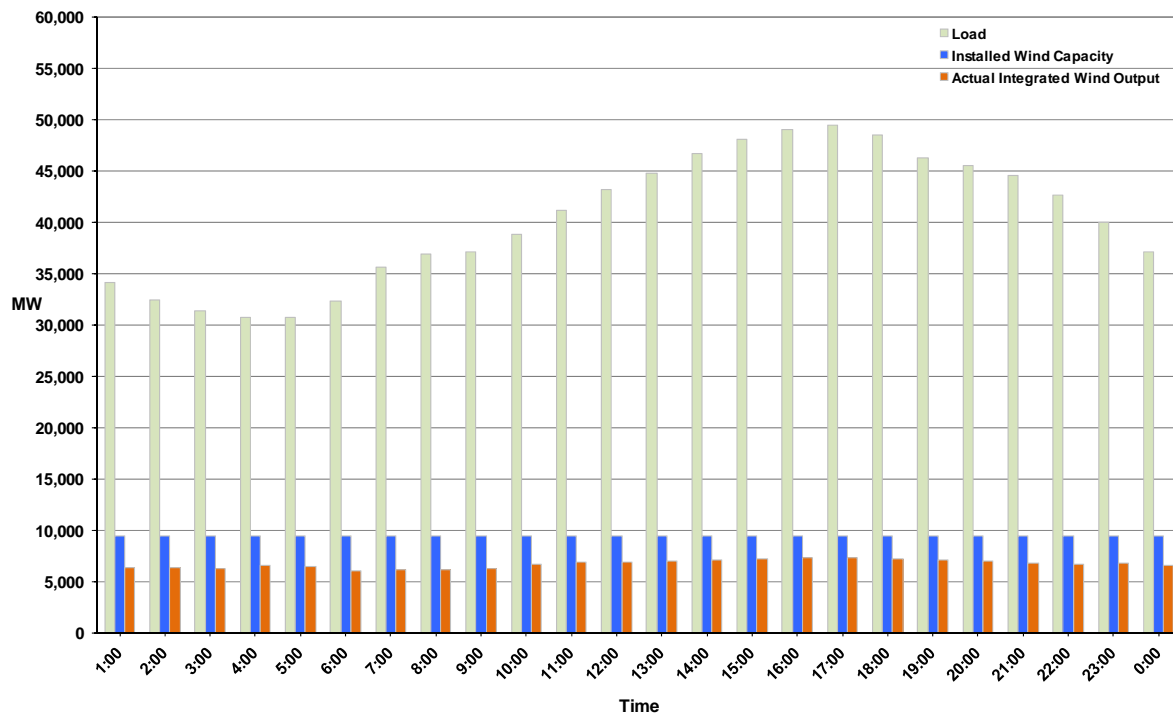




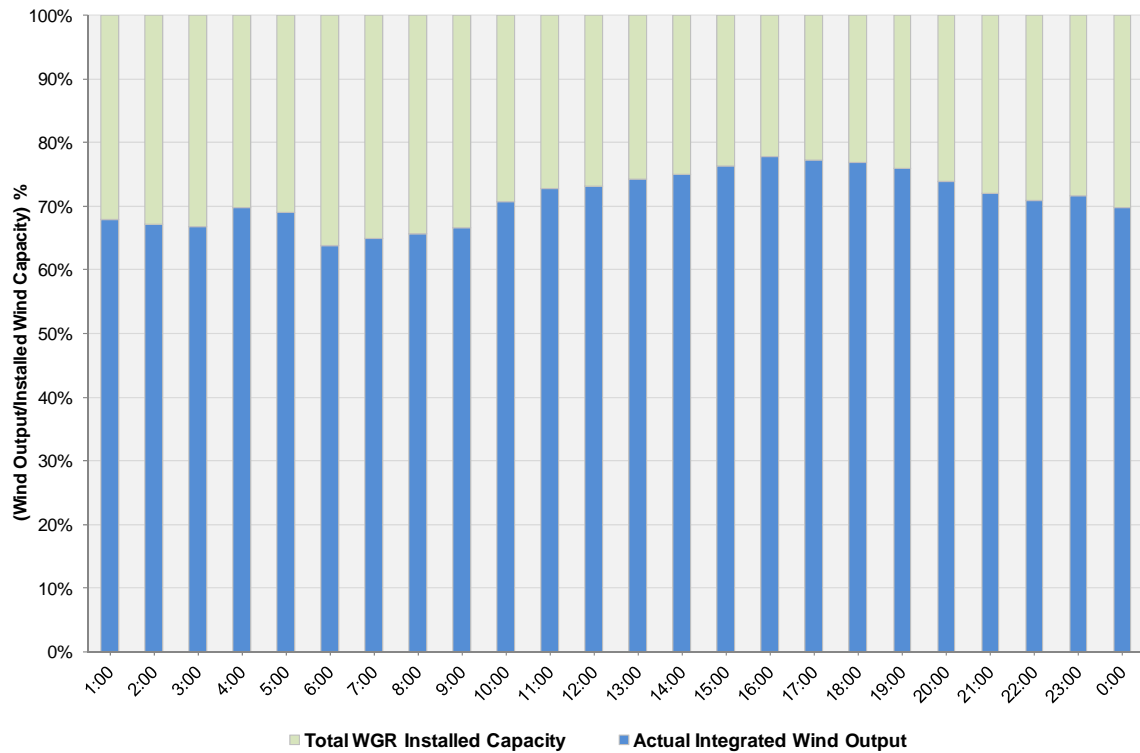
ERCOT Grid Operations Wind Integration Report: 10/07/11

| | |
|--------------------------------|-----------|
| Peak Load | 49,452 MW |
| Load Peak Hour | 17 |
| Wind over Peak | 7,288 MW |
| Wind Record 06/19/11 | 7,355 MW |
| Max Wind Value (Instantaneous) | 7,400 MW |
| Wind Peak Time | 15:06:00 |
| Wind Integration % | 15.18% |

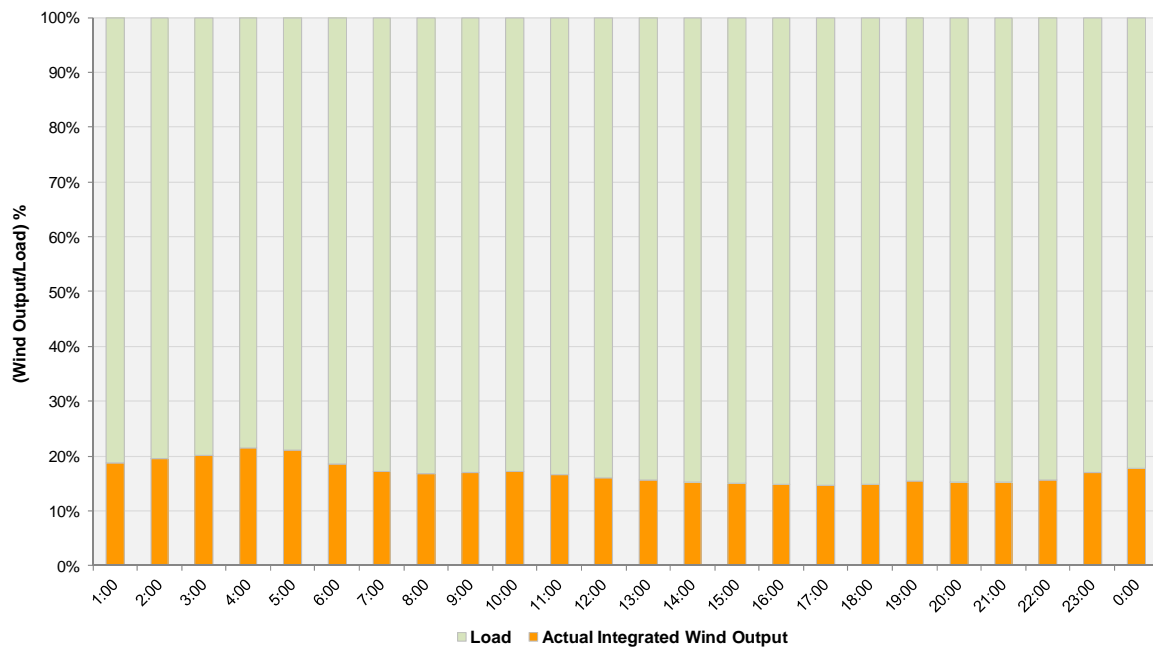
Hourly Average Actual Load vs. Actual Wind Output
10-07-2011



Actual Wind Output as a Percentage of the Total Installed Wind Capacity
10-07-2011



Actual Wind Output as a Percentage of the ERCOT Load
10-07-2011



ERCOT Load vs. Actual Wind Output 9/30/2011 - 10/7/2011

